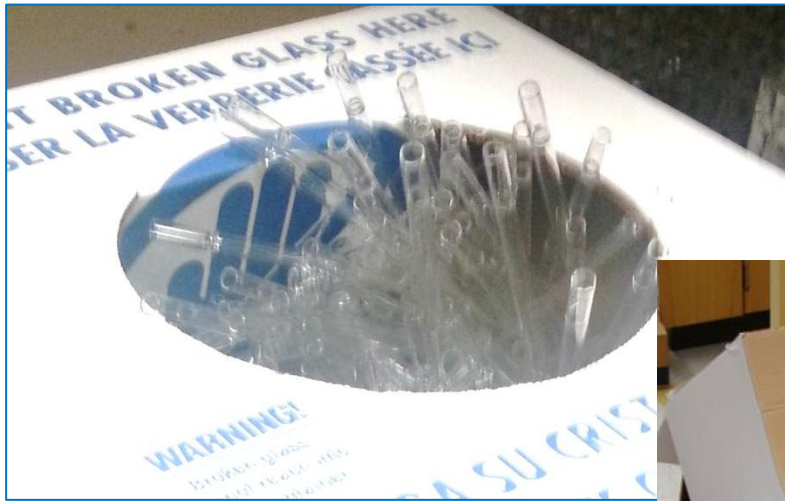


SAFETY ALERT

Broken Glass Disposal Boxes

What's wrong with these pictures?

Over-filled, wet, too big/heavy, protruding sharps etc
All injure custodians



Prevention

Use boxes
< 20" in
height.



Set boxes in trays



Tape shut
< 90 % full



UNIVERSITY OF MINNESOTA

Environmental Health & Safety



UNIVERSITY OF MINNESOTA